

# THE POINT

## BEDROOM CASEGOODS

ITEM # \_\_\_\_\_

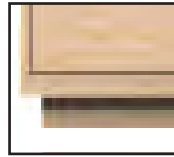
ITEM NAME \_\_\_\_\_

### STEP 1

Choose Your Plinth Base or Leg Option



B1 Plinth Base  
4"



B2 Plinth Base  
2"  
(Overall Height  
2" Lower)



L2 Full  
Tapered Legs  
w/Ferrules  
Specify Ferrules:

- Nickel
- Brass
- Antique Brass



L4 Metal Legs  
Specify Color:

- Nickel
- Antique Brass



L0 No Legs  
or Base  
(Overall Height  
4" Lower)

### STEP 2

Choose Your EXTERIOR Finish: \_\_\_\_\_

\*See Page 26 For Finish Options.

### STEP 3

Choose Your Drawer Front Finish/Leather/Fabric/Raffia & Onlay Configuration



M0 No Onlay

Specify Finish or Application: \_\_\_\_\_

See Page 26 for Finish Options  
OR  
See Pages 26 & 27 for M0 No Onlay  
Leather & Fabric Options



M2 Outside Flat Bead Onlay

\*Surcharge Applies

Specify Finish or Application: \_\_\_\_\_

See Page 26 for Finish Options  
OR  
See Page 27 for M2 Onlay Leather  
Options

### STEP 4

Choose Your Drawer Front Onlay Finish: \_\_\_\_\_

\*Applicable for Onlay M2  
\*See Page 26 For Finish Options.

# THE POINT

## BEDROOM CASEGOODS

### STEP 5

### Choose Your Drawer Front Hardware

\*See Pages 28 & 29 For Hardware Options.

\*2 Knobs or Rings per drawer standard

\*1 Handle per drawer standard (Available with 2 for surcharge)

Number of Hardware per Drawer: \_\_\_\_\_

#### Handle Options

- HH1
- HH3
- HH4
- HH5
- HH6
- HH7
- HH8
- HH9
- HH10
- HH11
- HH12
- HH12BL
- HH14
- HH15
- HH15C
- HH16

#### Knob Options

- HK5
- HK6
- HK7
- HK8
- HK9
- HK10
- HK11

#### Ring Options

- HR1
- HR2
- HR3

---

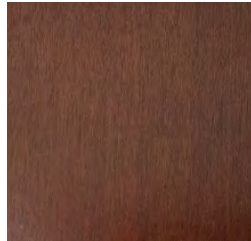
#### Pendant Option

- HP1

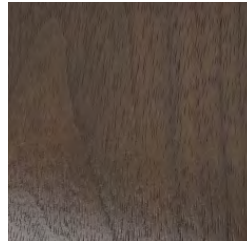
# THE POINT

## BEDROOM CASEGOODS

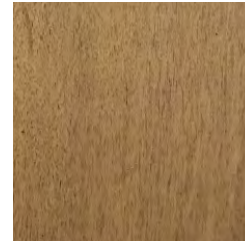
### Finish Options



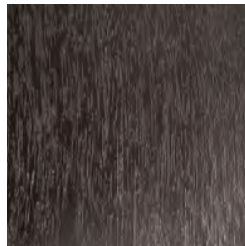
W1 Windsor  
Walnut



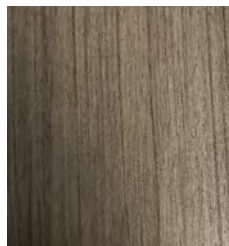
W2 Regency  
Walnut



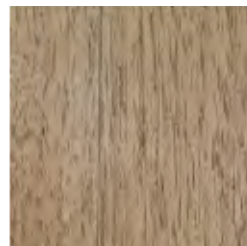
W4 Cashew  
Non-Distressed  
Walnut



W5 Ebonized Black  
Walnut



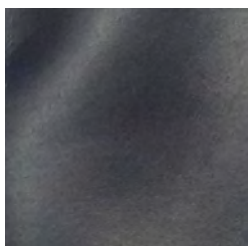
W6 Smoke Gray  
Walnut



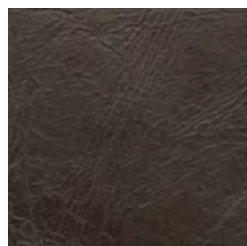
W3 Bleached  
Walnut

### Leather Options for M0 No Onlay

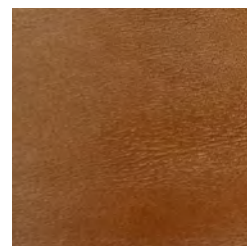
(These Leather Applications Can Only Be Used with the M0 No Onlay Option)



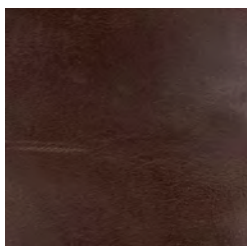
L11 9381-03  
Bentley Deep Sea



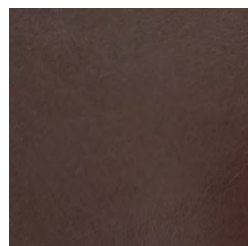
L12 9381-09  
Bentley Seal Skin



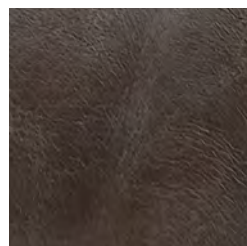
L13 9381-10  
Bentley Baked Clay



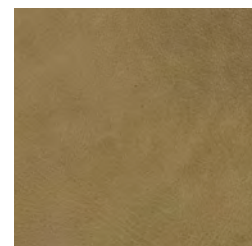
L14 9381-12  
Bentley Fury Brown



L16 9381-20  
Bentley Saddle



L18 9381-31  
Bentley Espresso



L41 9423-12  
Bedford Rhine

# THE POINT

## BEDROOM CASEGOODS

Fabric Options for M0 No Onlay  
(These Fabric Applications Can Only Be Used with the M0 No Onlay Option)



F11 7770-04  
Flaye



F12 7782-34  
Black Watch Modern

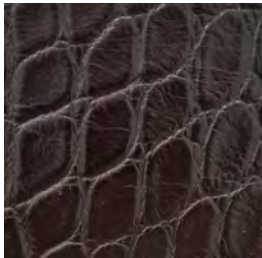


F13 7783-88  
Lindsay Modern

---

Leather Options for M2 Outside Flat Bead  
(These Leather Applications Can Only Be Used with the M2 Outside Flat Bead Onlay Option)  
\*M2 Onlay Surcharge Applies

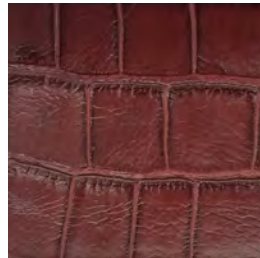
### Tuscany Crocodile Leather Options



L21 1158-20  
Tuscany Brown



L22 1158-22  
Light Saddle

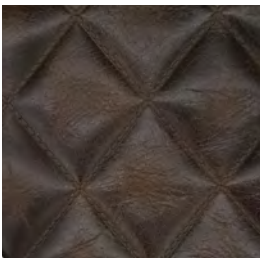


L23 1158-30  
Dark Saddle

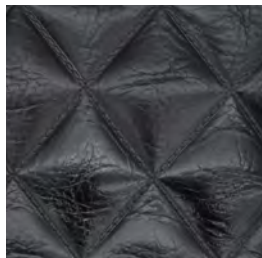


L24 1158-50  
Black

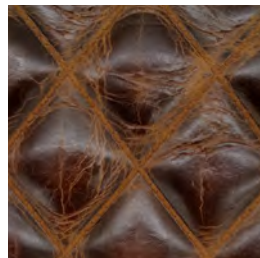
### Diamond Stitch Bolero Leather Options



L31 9393-04  
Olive



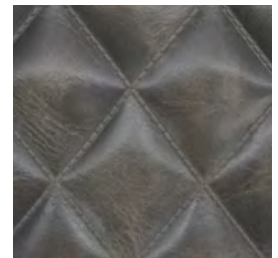
L32 9393-09  
Black



L33 9393-10  
Sierra Carmel



L34 9393-12  
Brandy



L35 9393-19  
Cement

# THE POINT

## BEDROOM CASEGOODS

### Hardware Options

\*2 Knobs or Rings per drawer standard  
 \*1 Handle per drawer standard (Available with 2 for surcharge)



HH1 Large Bit Handle 5.75"



HH3 Large Handle



HH4 Chrome Pull Ring



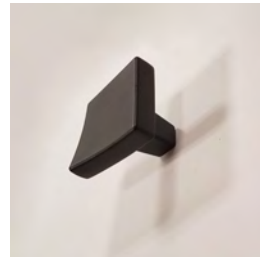
HH5 Chrome Flex Handle 5.25"



HK5 Chrome Flex Knob 1.25"



HH6 Oil Rubbed Bronze Flex Handle 5.25"



HK6 Oil Rubbed Bronze Flex Knob 1.25"



HH7 Textured Chrome Handle 6"



HK7 Textured Chrome Knob 1.25"



HH12BL Black Round Handle 9"



HH12 Brass Round Handle 9"



HH15 Brass Flat Handle 7.5"



HH15AB Antique Brass Flat Handle 7.5"



HH15C Brushed Chrome Flat Handle 7.5"



HH16 Brass/Black Nickel Handle 7.25"



# THE POINT

## BEDROOM CASEGOODS

### Hardware Options Cont.

\*2 Knobs or Rings per drawer standard  
 \*1 Handle per drawer standard (Available with 2 for surcharge)



HH8 Brown Leather  
Handle 6.75"



HK8 Brown Leather  
Knob 3"



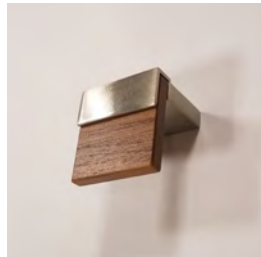
HH9 Black Leather  
Handle 6.75"



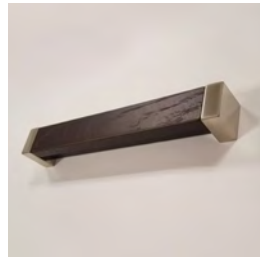
HK9 Black Leather  
Knob 3"



HH10 Wood & Metal  
L-Handle 9"



HK10 Wood & Metal  
L-Knob 1.25"



HH11 Wood & Metal  
Block Handle 6.75"



HK11 Wood & Metal  
Block Knob 1.25"



HR1 Brass Plate  
Ring Pull 2"



HR2 Satin Nickel  
Ring Pull 2"



HR3 Polished Nickel  
Ring Pull 2"



HH14 Brass Bail  
Pull 4"



HP1 Brass  
Rectangular Pendant  
3"