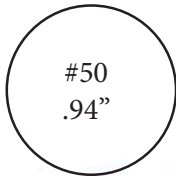
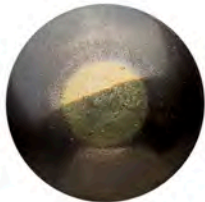


E J V I C T O R

NAILHEADS



#50
.94"



Black Brass
N1 = #9
N2 = #54
N3 = #52



#52
.875"



Black Nickel
N4 = #9
N5 = #54
N6 = #52



#37
.81"



Hammered Brass
N7 = #9
N8 = #54
N9 = #52



#54
.625"



#9
.5"



#6
.375"



Hammered Silver
N10 = #9
N11 = #54
N12 = #52



Old Brass
N13 = #52
N14 = Button
N15 = #9



Old Brass
N16 = Conical



Antique Brass
N17 = #9
N18 = #54
N19 = #52



Natural
N20 = #9
N21 = #52
N22 = #50
N23 = #37
N24 = #54



French Natural
N25 = #9
N26 = #54
N27 = #52



French Natural "A"
N28 = #9
N29 = #54
N30 = #52



Pewter
N31 = #6
N32 = #9
N33 = #54
N34 = #52
N70 = #37



Polished Nickel
N35 = #6
N36 = #9
N37 = #54
N38 = #52



Gilt Gold
N39 = #6
N40 = #9
N41 = #54
N42 = #52



Old Gold Spotted "It"
N43 = #9
N44 = #54



Old Gold "E"
N45 = #9
N46 = #52



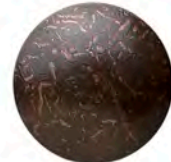
Old Gold "Z"
N47 = #9
N48 = #54
N49 = #52



Decorative
Old Gold "E"
N53 = #9



Cut Tack
N55



Old Brass Zinc
N56 = #9
N57 = #54
N58 = #37



Old Gold "E"
PN50 = Square



Decorative Old Gold "E"
PN51 = #54
PN52 = #9



Oxford
PN54 = Square



Antique Brass
PN59 = Small Square



Polished Nickel
PN60 = Square